

## Scenic Helicopter Transfers to Turneffe Island Resort

Experience the ultimate arrival to **Turneffe Island Resort** with a breathtaking helicopter flight over Belize's stunning seascapes. Nestled within the **Turneffe Atoll**, this exclusive island retreat is surrounded by **crystal-clear waters, pristine coral reefs, and lush mangroves**—a paradise best viewed from the air.

With **three spectacular routes** to choose from, each helicopter journey offers **unparalleled aerial views of Belize's natural wonders**, making your transfer to the resort a once-in-a-lifetime adventure.



### Option 1: Direct Route to Turneffe Island Resort (Blue Route)



For those looking for the quickest and most direct route, this flight takes you straight from **Philip S. W. Goldson International Airport** to Turneffe Island Resort. Shortly after takeoff, the helicopter glides over **the Caribbean Sea**, where the vibrant turquoise shallows gradually shift into the deep blue of open water. As you ascend, the expanse of the **Barrier Reef** comes into view, stretching endlessly along the horizon. Crossing the reef, the vastness of the ocean becomes apparent, with nothing but sea and sky surrounding you. Before long, the **Turneffe Atoll emerges**, a breathtaking collection of small cayes, winding channels, and lush mangrove forests. The journey concludes as you arrive at **Big Caye Bokel**, the southern tip of the atoll, where **Turneffe Island Resort's private heliport**

awaits. This **efficient yet visually stunning route** is perfect for those eager to begin their island escape without delay.

### Option 2: Belize City and Reef Flight Transfer to Turneffe Island Resort (Red Route)

For a more immersive aerial experience, this route begins with a **scenic overflight of Belize City**, offering a unique perspective of the country's historic city. From the air, the city unfolds like a map. Leaving the urban landscape behind, the flight continues out over the Caribbean, passing over the picturesque **cayes that border the Barrier Reef**. Along the way, you may spot **Swallow Caye, home to a protected manatee sanctuary**, as well as **Gallows Point, Spanish Lookout Caye, Water Caye, and Goff's Caye**, each surrounded by shimmering blue waters.

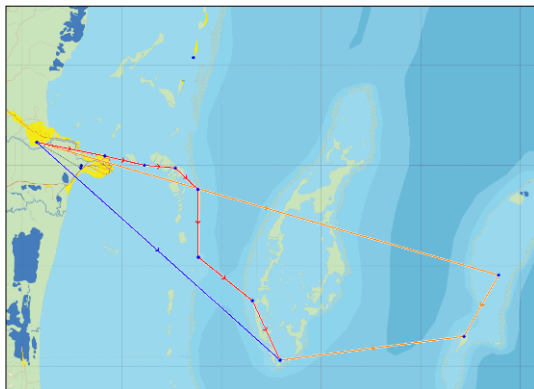


As the flight follows the **coastline of the Barrier Reef**, you can admire the **kaleidoscope of colors beneath you**, where coral formations contrast against the deep blue of the ocean. Crossing the reef, the journey leads toward **Turneffe Atoll**, where the maze of mangrove cayes and sand flats signal

your approach. Upon arrival at **Turneffe Island Resort**, the white sandy beaches and crystal-clear waters below mark the perfect welcome to your island retreat. This **extended, scenic route offers an incredible blend of city views, coastal beauty, and reef exploration**, making it ideal for travelers who want to take in as much of Belize as possible before reaching their final destination.

### Option 3: Blue Hole Over Flight Transfer to Turneffe Island Resort (Orange Route)

For the ultimate aerial adventure, this route takes you beyond the Barrier Reef to witness **Belize's most iconic natural wonder—the Great Blue Hole**. Departing from **Belize International Airport**, the flight heads east over the mainland before reaching the open waters of the Caribbean. As you gain altitude, the **Barrier Reef unfolds beneath you**, a vast marine ecosystem teeming with life. Flying over **Gallows Point**, you'll see waves crashing against the reef, with possible glimpses of **sharks, dolphins, stingrays, and sea turtles** below.



Approaching **Turneffe Atoll**, the flight passes **Snake Point and the Central Lagoon**, where **mangrove cayes and winding channels** define the landscape. The atoll, stretching **30 miles long and 10 miles wide**, is the largest of Belize's three atolls and home to over **200 small islands**. The area's **rich marine biodiversity** makes it a vital habitat for **eagle rays, turtles, green moray eels, nurse sharks, and massive schools of jacks and groupers**.

Continuing east, you reach **Lighthouse Reef Atoll**, home to the **world-famous Blue Hole**, a massive underwater sinkhole

formed thousands of years ago. From the air, it appears as a **perfectly round, deep blue circle**, contrasting dramatically with the surrounding turquoise waters. Measuring **1,000 feet across and 460 feet deep**, this UNESCO World Heritage Site is truly a breathtaking sight.



After circling the Blue Hole, the journey continues over **Half Moon Caye Natural Monument**, a pristine protected area known for its **nesting seabirds and vibrant marine life**. The return flight takes you back over **Turneffe Atoll**, descending smoothly toward **Turneffe Island Resort**, where your luxury retreat awaits. This **extraordinary route offers an unforgettable blend of adventure, nature, and stunning aerial views**.